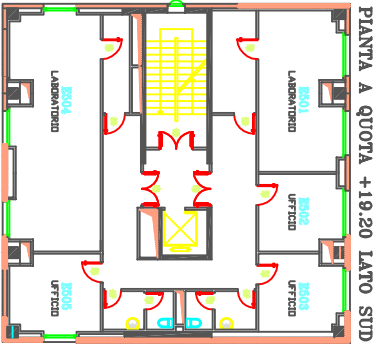
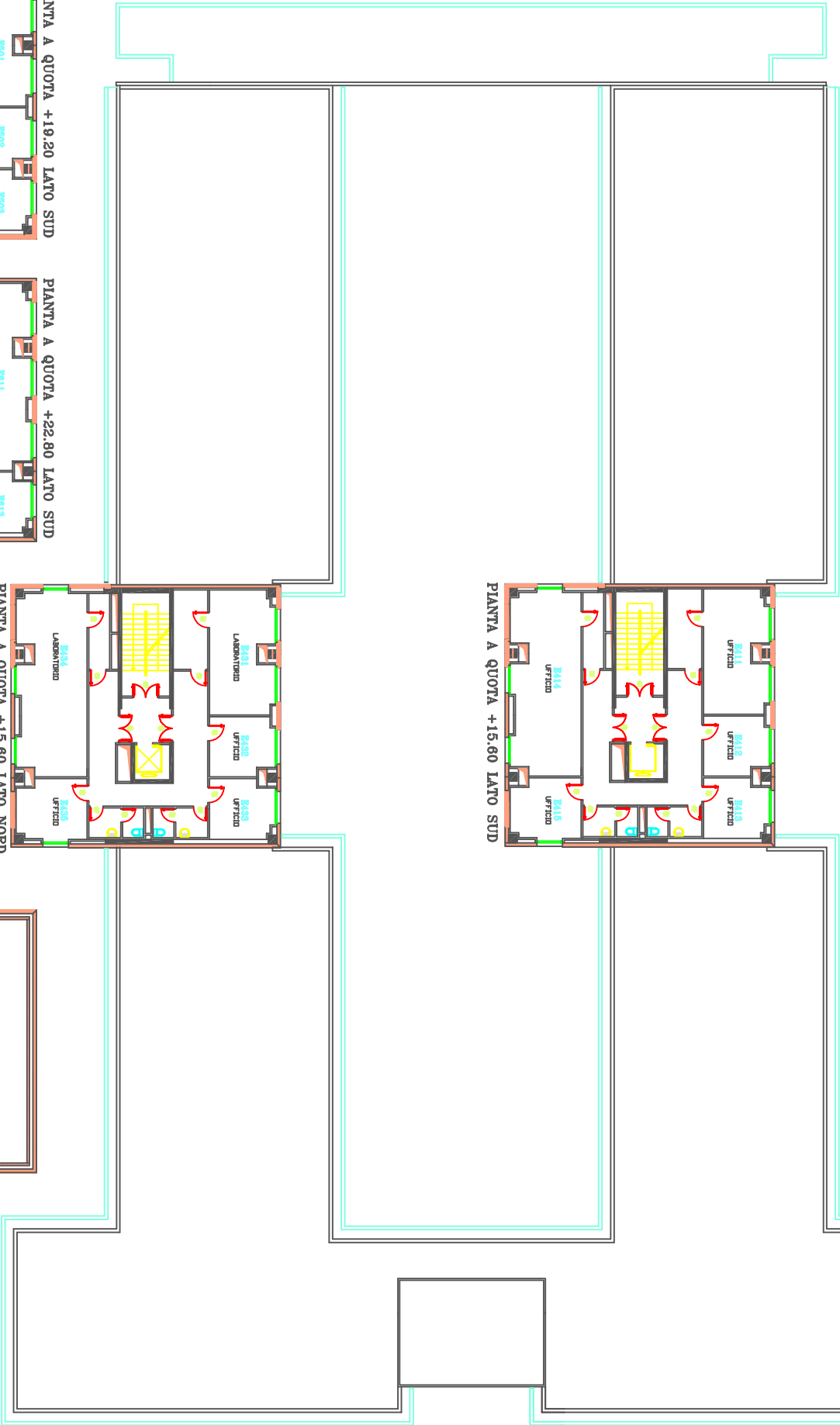
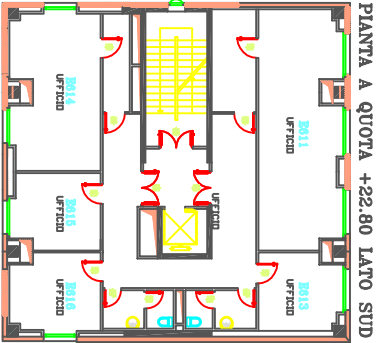


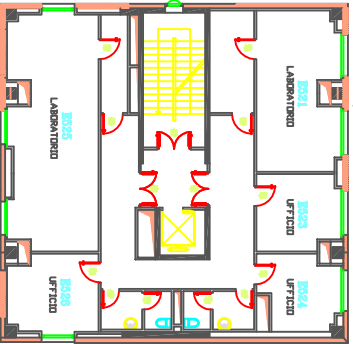
PIANTA A QUOTA +15.60 LATO SUD



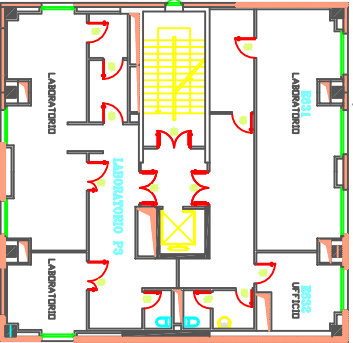
PIANTA A QUOTA +19.20 LATO SUD



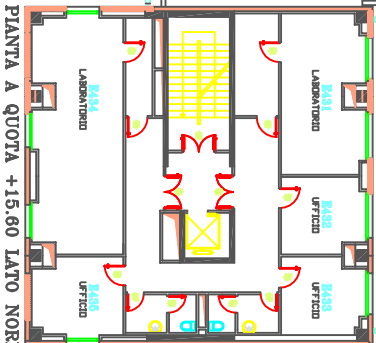
PIANTA A QUOTA +22.80 LATO SUD



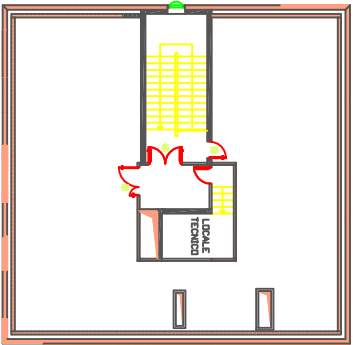
PIANTA A QUOTA +19.20 LATO NORD



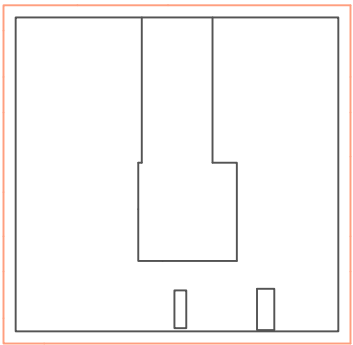
PIANTA A QUOTA +22.80 LATO NORD



PIANTA A QUOTA +15.60 LATO NORD



PIANTA A QUOTA +26.40  
LATO SUD/NORD



PIANTA A QUOTA +29.45  
LATO SUD/NORD

UNIVERSITA' DEGLI STUDI DI ROMA  
"TOR VERGATA"

FACOLTA' DI MEDICINA  
EDIFICIO E

PIANTE PIANI:  
QUARTO(+15.60)-QUINTO(19.20)  
SESTO(+22.80)-SETTIMO(26.40)  
COPERTURE(+228.45)

PROGETTO:  
UFFICIO TECNICO UNIVERSITA' DEGLI STUDI DI ROMA "TOR VERGATA"

|                          |  |                   |  |
|--------------------------|--|-------------------|--|
| PROGETTO PRELIMINARE     |  | SCALA 1:100       |  |
| AUTORENTO                |  | DATA Ottobre 2004 |  |
| Arch. Alessandra Bonaldi |  | FIRMA R.          |  |
| REDAZIONE                |  | E6                |  |
| pianta stato attuale     |  |                   |  |